

HVL WIRING STANDARDS INDEX

# HVL20-001	2 CT'S; 1 AMMETER; 1 AMMETER SWITCH
# HVL20-002	2 CT'S; 1 AMMETER; 1 CURRENT TEST BLOCK 1 AMMETER SWITCH
# HVL20-003	2 PT'S; 1 VOLTMETER; 1 VOLTMETER SWITCH
# HVL20-004	2 PT'S; 1 VOLTMETER; 1 VOLTAGE TEST BLOCK; 1 VOLTMETER SWITCH
# HVL20-005	2 CT'S; 2 PT'S; 1 WATTHOUR METER
# HVL20-006	2 CT'S; 2 PT'S; 1 CURRENT TEST BLOCK; 1 VOLTAGE TEST BLOCK; 1 WATTHOUR METER
# HVL20-007	2 CT'S; 2 PT'S; 1 VOLTMETER & SWITCH; 1 AMMETER & SWITCH
# HVL20-008	2 CT'S; 1 AMMETER, SWITCH, & TEST BLOCK; 2 PT'S; 1 VOLTMETER, SWITCH & TEST BLOCK
# HVL20-009	2 CT'S; 2 PT'S; 1 AMMETER & SWITCH; 1 WATTHOUR METER
# HVL20-010	2 CT'S; 2 PT'S; 1 AMMETER & SWITCH; 2 TEST BLOCKS; 1 WATTHOUR METER
# HVL20-011	2 CT'S; 2 PT'S; 1 VOLTMETER & SWITCH; 1 WATTHOUR METER
# HVL20-012	2 CT'S; 2 PT'S; 1 VOLTMETER & SWITCH; 2 TEST BLOCKS; 1 WATTHOUR METER
# HVL20-013	2 CT'S; 2 PT'S; 1 AMMETER & SWITCH; 1 VOLTMETER & SWITCH; 1 WATTHOUR METER
# HVL20-014	2 CT'S; 1 AMMETER, SWITCH, & TEST BLOCK; 2 PT'S; 1 VOLTMETER, SWITCH, & TEST BLOCK; 1 WATTHOUR METER
# HVL20-015	3 CT'S; 1 AMMETER, 1 AMMETER SWITCH
# HVL20-016	3 CT'S; 1 AMMETER, SWITCH, & TEST BLOCK
# HVL20-017	3 PT'S; 1 VOLTMETER; 1 VOLTMETER SWITCH
# HVL20-018	3 PT'S; 1 VOLTMETER, SWITCH & TEST BLOCK
# HVL20-019	3 CT'S; 2 PT'S; 1 WATTHOUR METER



HVL20-020
3 CT'S; 2 PT'S; 1 CURRENT TEST BLOCK;
1 VOLTAGE TEST BLOCK; 1 WATTHOUR METER

HVL20-021
3 CT'S; 3 PT'S; 1 AMMETER & SWITCH;
1 VOLTMETER & SWITCH

HVL20-022
3 CT'S; 1 AMMETER, SWITCH, & TEST BLOCK;
3 PT'S; 1 VOLTMETER, SWITCH & TEST BLOCK

HVL20-023
3 CT'S; 2 PT'S; 1 AMMETER & SWITCH;
1 WATTHOUR METER

HVL20-024
3 CT'S; 2 PT'S; 1 AMMETER & SWITCH;
2 TEST BLOCKS; 1 WATTHOUR METER

HVL20-025
3 CT'S; 3 PT'S; 1 VOLTMETER & SWITCH;
1 WATTHOUR METER

HVL20-026
3 CT'S; 3 PT'S; 1 VOLTMETER & SWITCH;
2 TEST BLOCKS; 1 WATTHOUR METER

HVL20-027
3 CT'S; 3 PT'S; 1 AMMETER & SWITCH;
1 VOLTMETER & SWITCH; 1 WATTHOUR METER

HVL20-028
3 CT'S; 1 AMMETER, SWITCH, & TEST BLOCK;
3 PT'S; 1 VOLTMETER, SWITCH, & TEST
BLOCK; 1 WATTHOUR METER

HVL20-029
2 CT'S; 1 AMMETER, SWITCH, & TEST BLOCK;
2 PT'S; 1 VOLTMETER, SWITCH, & TEST
BLOCK; 1 WATTHOUR METER; 1 POWER FACTOR
METER

HVL20-030
1 PT; 1 VOLTMETER

HVL20-031
1 CT; 1 AMMETER

HVL20-032
3 CT'S; 2 PT'S; 1 AMMETER & SWITCH; 1
VOLTMETER & SWITCH; 1 POWER FACTOR METER

HVL20-033
3 CT'S; 2 PT'S; 1 TEST SWITCH; 1 WATT-
HOUR METER SOCKET

HVL20-034
3 CT'S; 2 PT'S; 1 AMMETER & SWITCH;
1 VOLTMETER & SWITCH

HVL20-035
3 CT'S; 2 PT'S; 1 IQ DATA PLUS

HVL20-036
2 CT'S; 2 PT'S; 1 AMMETER & SWITCH;
1 WATTHOUR METER



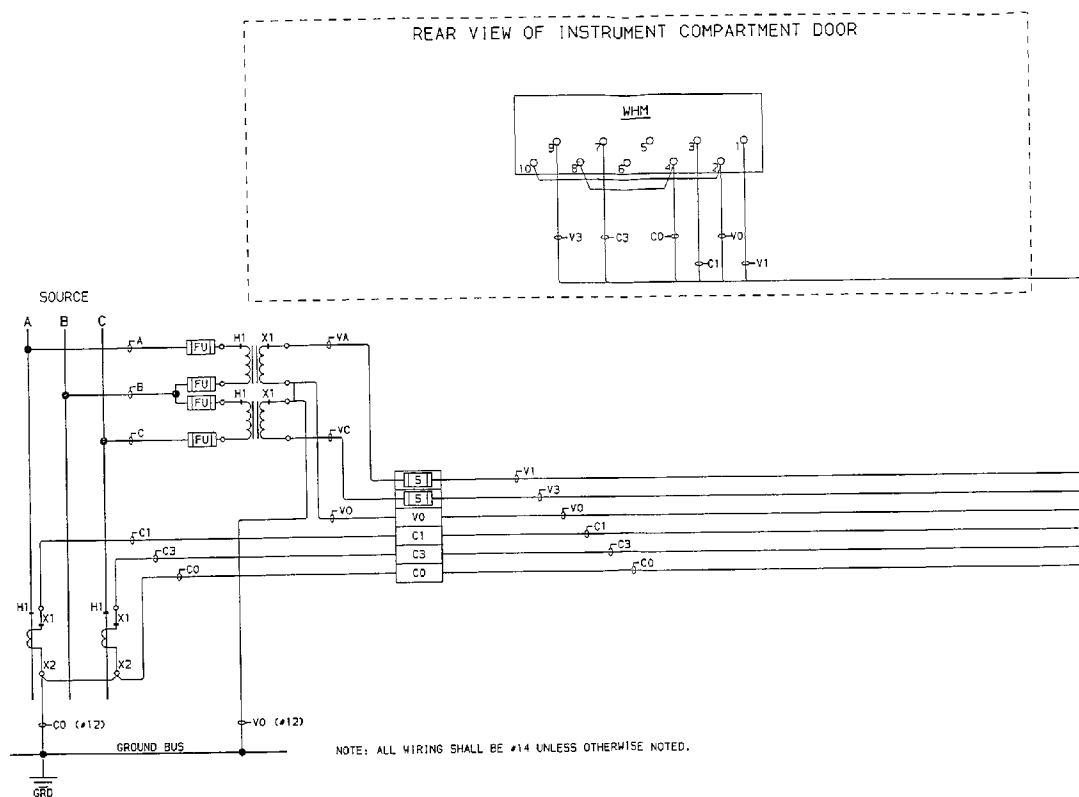
TECHNICAL SERVICES DIVISION

We Respond.

RE
0

REV
0

REV	KEY	REVISION	BY	DATE



"THE SQUARE D COMPANY HAS PROPRIETARY RIGHTS TO THE INFORMATION CONTAINED HEREON. THIS INFORMATION REMAINS THE PROPERTY OF SQUARE D COMPANY AND MAY BE USED ONLY IN CONFORMANCE WITH INSTRUCTIONS ISSUED BY SQUARE D COMPANY. THIS DOCUMENT IS ISSUED IN CONFIDENCE. IT MAY NOT BE REPRODUCED WITHOUT WRITTEN PERMISSION FROM THE SQUARE D COMPANY, AND MAY BE RECALLED AT ANY TIME."

APPLICATION STANDARD DRAWING

3-PHASE, 3-WIRE METERING DIAGRAM WITH THE FOLLOWING DEVICES:
2-CT, 2-VT, 1-WHM (DS-63 OR DSM-63).



NOTE: ALL WIRING SHALL BE #14 UNLESS OTHERWISE NOTED.

"THE SQUARE D COMPANY HAS PROPRIETARY RIGHTS TO THE INFORMATION CONTAINED HEREON. THIS INFORMATION REMAINS THE PROPERTY OF SQUARE D COMPANY AND MAY BE USED ONLY IN CONFORMANCE WITH INSTRUCTIONS ISSUED BY SQUARE D COMPANY. THIS DOCUMENT IS ISSUED IN CONFIDENCE. IT MAY NOT BE REPRODUCED WITHOUT WRITTEN PERMISSION FROM THE SQUARE D COMPANY, AND MAY BE RECALLED AT ANY TIME."

APPLICATION STANDARD DRAWING

3-PHASE, 3-WIRE METERING DIAGRAM WITH THE FOLLOWING DEVICES:
2-CT, 2-VT, 1-CTB, 1-VTB, 1-WHM (DS-63 OR DSM-63).



POWER EQUIPMENT DIVISION

B	HVL20-006
---	-----------

REV
0

RE
Ω

REAR VIEW OF INSTRUMENT COMPARTMENT DOOR

AS-2408C

CONTACTS	DECK	DEF	POSITION		
			1	2	3
11	1		X	X	X
11	1		X	X	X
21	2	X	X	X	X
21	2	X	X	X	X

* DENOTES MAKE-BEFORE-BREAK
X DENOTES CONTACT CLOSED

THE SQUARE D COMPANY HAS PROPRIETARY RIGHTS TO THE INFORMATION CONTAINED HEREON. THIS INFORMATION REMAINS THE PROPERTY OF SQUARE D COMPANY AND MAY BE USED ONLY IN CONFORMANCE WITH INSTRUCTIONS ISSUED BY SQUARE D COMPANY. THIS DOCUMENT IS ISSUED IN CONFIDENCE. IT MAY NOT BE REPRODUCED WITHOUT WRITTEN PERMISSION FROM THE SQUARE D COMPANY, AND MAY BE RECALLED AT ANY TIME.

APPLICATION STANDARD DRAWING

3-PHASE, 3-WIRE METERING DIAGRAM WITH THE FOLLOWING DEVICES:
2-CT, 2-VT, 1-AM, 1-AS, 1-WHM (DS-63 OR DSM-63).

SQUARE D COMPANY

POWER EQUIPMENT DIVISION

B HVL20-009

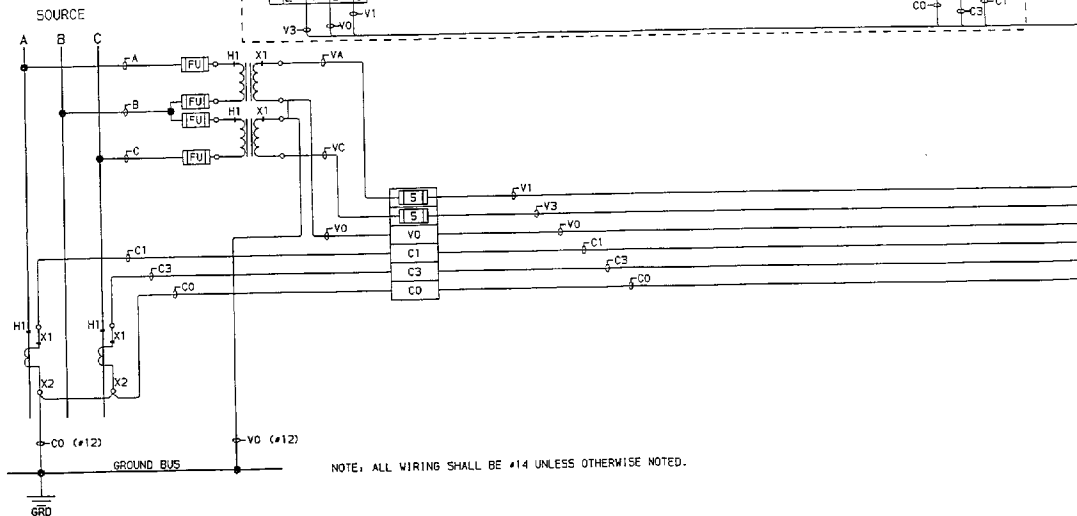
DT UALE

REAR VIEW OF INSTRUMENT COMPARTMENT DOOR

AS-2408C

CONTACTS	X	POSITION			
		DF	1	2	3
11	13	1	X	X	X
11	14	1	X	X	X
21	23	2	X	X	X
21	24	2	X	X	X

* DENOTES MAKE-BEFORE-BREAK
X DENOTES CONTACT CLOSED



NOTE: ALL WIRING SHALL BE #14 UNLESS OTHERWISE NOTED.

"THE SQUARE D COMPANY HAS PROPRIETARY RIGHTS TO THE INFORMATION CONTAINED HEREON. THIS INFORMATION REMAINS THE PROPERTY OF SQUARE D COMPANY AND MAY BE USED ONLY IN CONFORMANCE WITH INSTRUCTIONS ISSUED BY SQUARE D COMPANY. THIS DOCUMENT IS ISSUED IN CONFIDENCE. IT MAY NOT BE REPRODUCED WITHOUT WRITTEN PERMISSION FROM THE SQUARE D COMPANY, AND MAY BE RECALLED AT ANY TIME."

APPLICATION STANDARD DRAWING

3-PHASE, 3-WIRE METERING DIAGRAM WITH THE FOLLOWING DEVICES:
2-CT, 2-VT, 1-AM, 1-AS, 1-CTB, 1-VTB, 1-WHM (DS-63 OR DSM-63).



SQUARE D COMPANY

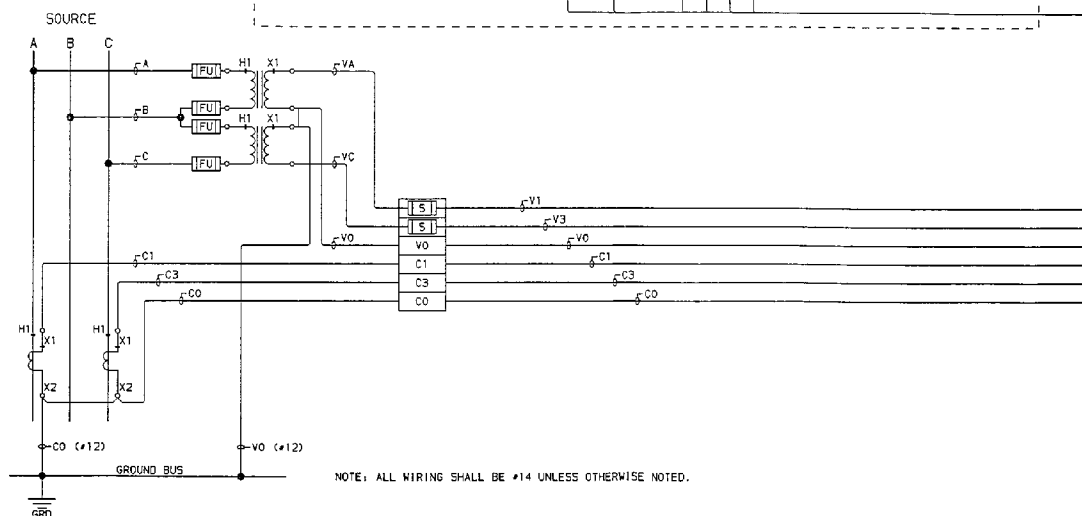
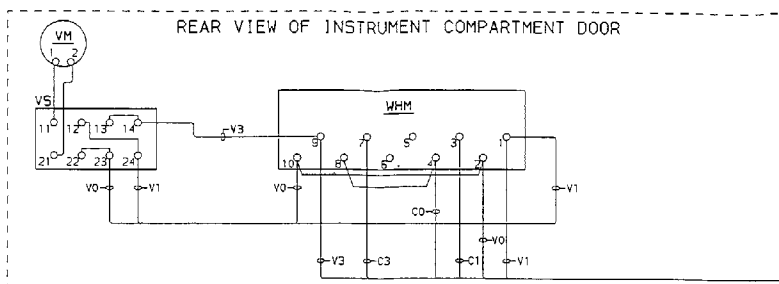
POWER EQUIPMENT DIVISION

B HVL20-010

REV
0

CONTACTS		DECK	POSITION			
			OFF	1-2	2-3	3-1
11	12	1		X		
	13				X	
	14					X
21	22	2		X		
	23				X	
	24					X

Y DENOTES CONTACT CLOSED



NOTE: ALL WIRING SHALL BE #14 UNLESS OTHERWISE NOTED.

"THE SQUARE D COMPANY HAS PROPRIETARY RIGHTS TO THE INFORMATION CONTAINED HEREON. THIS INFORMATION REMAINS THE PROPERTY OF SQUARE D COMPANY AND MAY BE USED ONLY IN CONFORMANCE WITH INSTRUCTIONS ISSUED BY SQUARE D COMPANY. THIS DOCUMENT IS ISSUED IN CONFIDENCE. IT MAY NOT BE REPRODUCED WITHOUT WRITTEN PERMISSION FROM THE SQUARE D COMPANY, AND MAY BE RECALLED AT ANY TIME."

APPLICATION STANDARD DRAWING

3-PHASE, 3-WIRE METERING DIAGRAM WITH THE FOLLOWING DEVICES:
2-CT, 2-VT, 1-VM, 1-VS, 1-WHM (DS-63 OR DSM-63).



POWER EQUIPMENT DIVISION

B	HVL20-011
---	-----------

REV
10



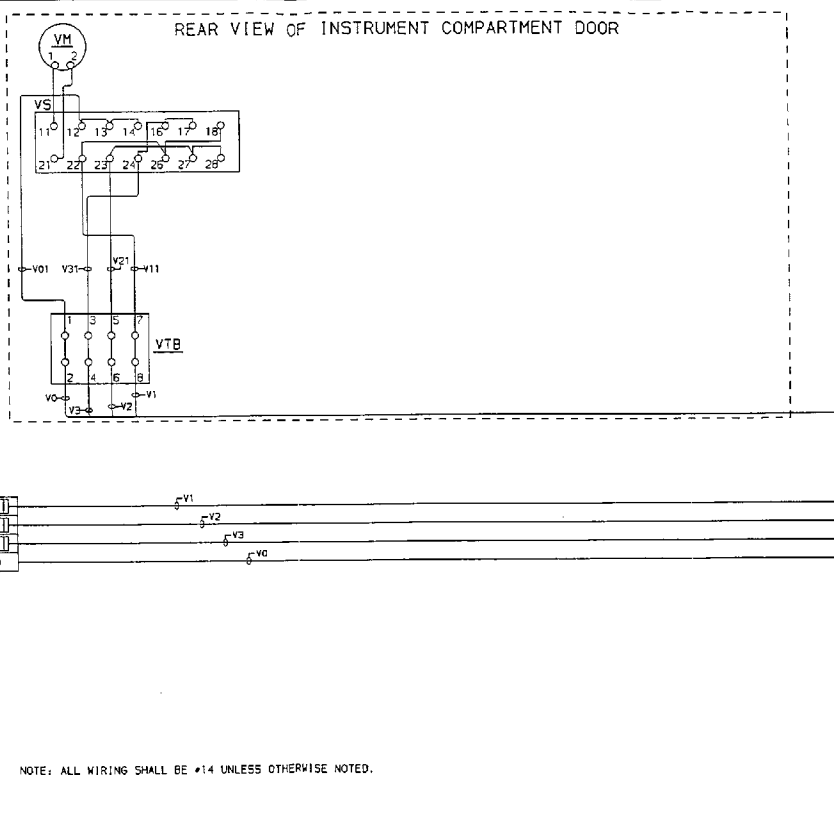
REV.
0

RE

SQUARE D COMPANY
POWER EQUIPMENT DIVISION

CONTACTS		POSITION						
	DECK	3-1	2-3	1-2	OFF	1	2	3
11	12							
	13							
	14						X	
	15							X
	16							
	17							
	18	X						
	19		X					
	20			X				
21	22					X		
	23						X	
	24							X
	25							
	26	X						
	27		X					
	28							
	29							
	30							

2. NOTES: CONTACT CLOSED



NOTE: ALL WIRING SHALL BE #14 UNLESS OTHERWISE NOTED.

"THE SQUARE D COMPANY HAS PROPRIETARY RIGHTS TO THE INFORMATION CONTAINED HEREON. THIS INFORMATION REMAINS THE PROPERTY OF SQUARE D COMPANY AND MAY BE USED ONLY IN CONFORMANCE WITH INSTRUCTIONS ISSUED BY SQUARE D COMPANY. THIS DOCUMENT IS ISSUED IN CONFIDENCE. IT MAY NOT BE REPRODUCED WITHOUT WRITTEN PERMISSION FROM THE SQUARE D COMPANY, AND MAY BE RECALLED AT ANY TIME."

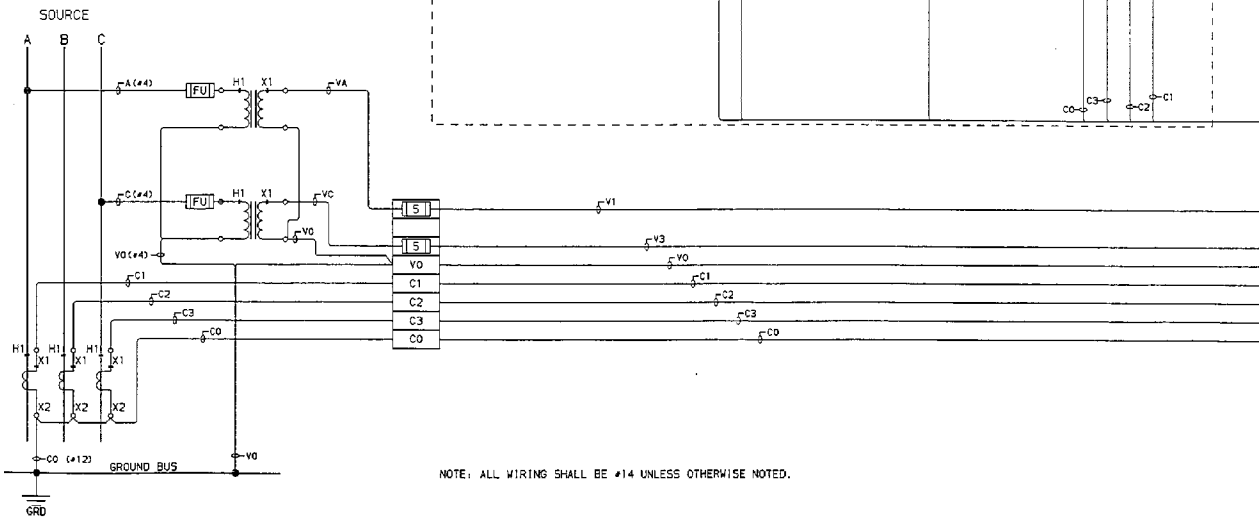
APPLICATION STANDARD DRAWING

3-PHASE, 4-WIRE METERING DIAGRAM WITH THE FOLLOWING DEVICES:
3-VT, 1-VM, 1-VS, 1-VTB.



01 UATC

REAR VIEW OF INSTRUMENT COMPARTMENT DOOR



"THE SQUARE D COMPANY HAS PROPRIETARY RIGHTS TO THE INFORMATION CONTAINED HEREON. THIS INFORMATION REMAINS THE PROPERTY OF SQUARE D COMPANY AND MAY BE USED ONLY IN CONFORMANCE WITH INSTRUCTIONS ISSUED BY SQUARE D COMPANY. THIS DOCUMENT IS ISSUED IN CONFIDENCE. IT MAY NOT BE REPRODUCED WITHOUT WRITTEN PERMISSION FROM THE SQUARE D COMPANY, AND MAY BE RECALLED AT ANY TIME."

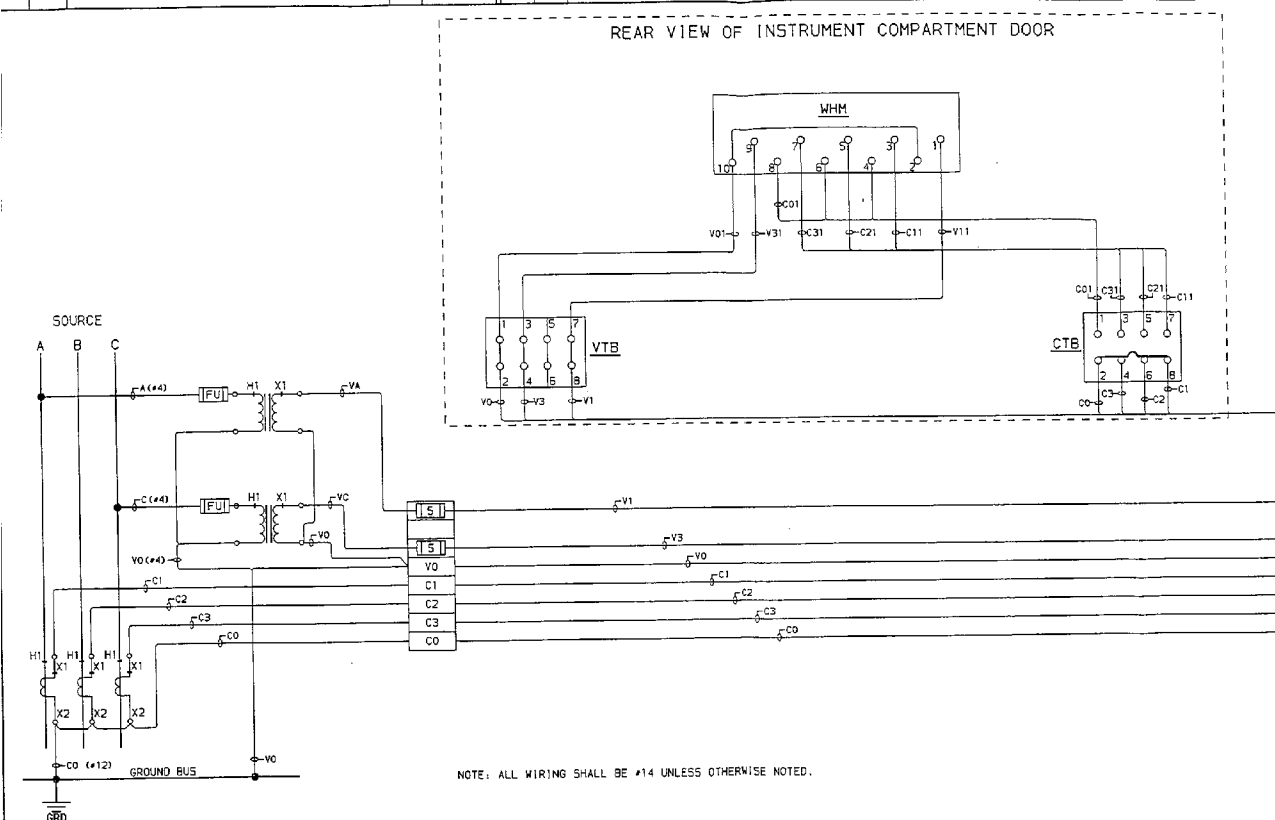
APPLICATION STANDARD DRAWING

3-PHASE, 4-WIRE METERING DIAGRAM WITH THE FOLLOWING DEVICES:
3-CT, 2-VT, 1-WHM (DS-65 OR DSM-65).

SQUARE D COMPANY
POWER EQUIPMENT DIVISION

B HVL20-019

RE
C

[illegible]

NOTE: ALL WIRING SHALL BE #14 UNLESS OTHERWISE NOTED.

"THE SQUARE D COMPANY HAS PROPRIETARY RIGHTS TO THE INFORMATION CONTAINED HEREON. THIS INFORMATION REMAINS THE PROPERTY OF SQUARE D COMPANY AND MAY BE USED ONLY IN CONFORMANCE WITH INSTRUCTIONS ISSUED BY SQUARE D COMPANY. THIS DOCUMENT IS ISSUED IN CONFIDENCE. IT MAY NOT BE REPRODUCED WITHOUT WRITTEN PERMISSION FROM THE SQUARE D COMPANY, AND MAY BE RECALLED AT ANY TIME."

APPLICATION STANDARD DRAWING

3-PHASE, 4-WIRE METERING DIAGRAM WITH THE FOLLOWING DEVICES:
3-CT, 2-VT, 1-CTB, 1-VTB, 1-WHM (DS-65 OR DSM-65).



SQUARE D COMPANY

POWER EQUIPMENT DIVISION

B	HVL 20-020
---	------------

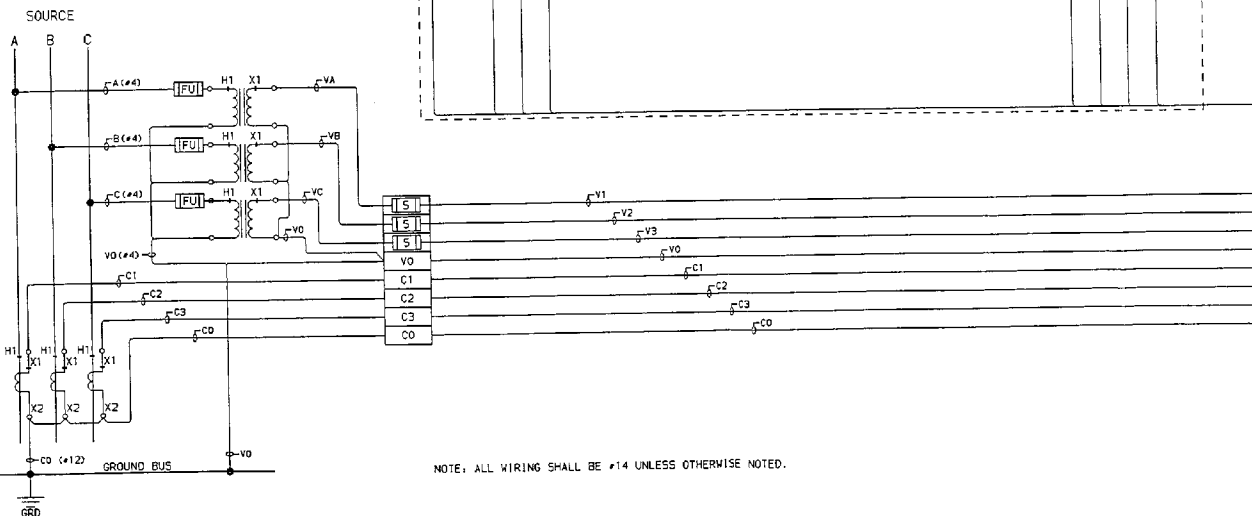
RE
0

AS-2410C

AS-2410C

CONTACTS	DECK	POSITION				
		OFF	1	2	3	4
11	1		X	X		
12					X	X
13					X	X
21	2		X	X		
22			X	X	X	X
23			X	X	X	X
24			X	X	X	X

* DENOTES MAKE-BEFORE-BREAK
X DENOTES CONTACT CLOSED



NOTE: ALL WIRING SHALL BE #14 UNLESS OTHERWISE NOTED.

"THE SQUARE D COMPANY HAS PROPRIETARY RIGHTS TO THE INFORMATION CONTAINED HEREON. THIS INFORMATION REMAINS THE PROPERTY OF SQUARE D COMPANY AND MAY BE USED ONLY IN CONFORMANCE WITH INSTRUCTIONS ISSUED BY SQUARE D COMPANY. THIS DOCUMENT IS ISSUED IN CONFIDENCE. IT MAY NOT BE REPRODUCED WITHOUT WRITTEN PERMISSION FROM THE SQUARE D COMPANY, AND, MAY BE RECALLED AT ANY TIME."

APPLICATION STANDARD DRAWING

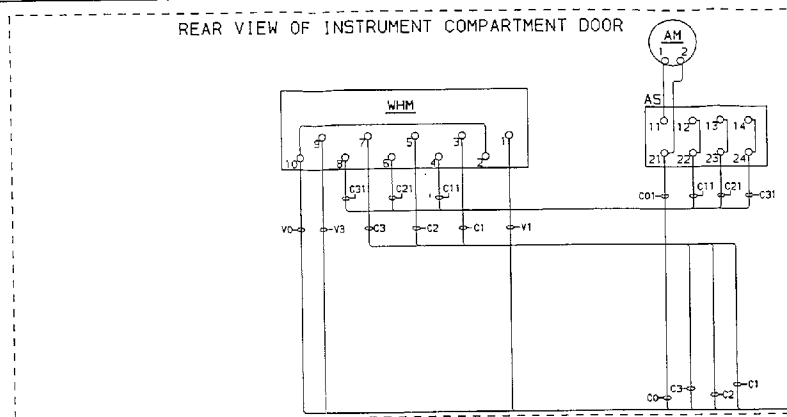
3-PHASE, 4-WIRE METERING DIAGRAM WITH THE FOLLOWING DEVICES:
3-CT, 3-VT, 1-AM, 1-AS, 1-VM, 1-VS.



POWER EQUIPMENT DIVISION

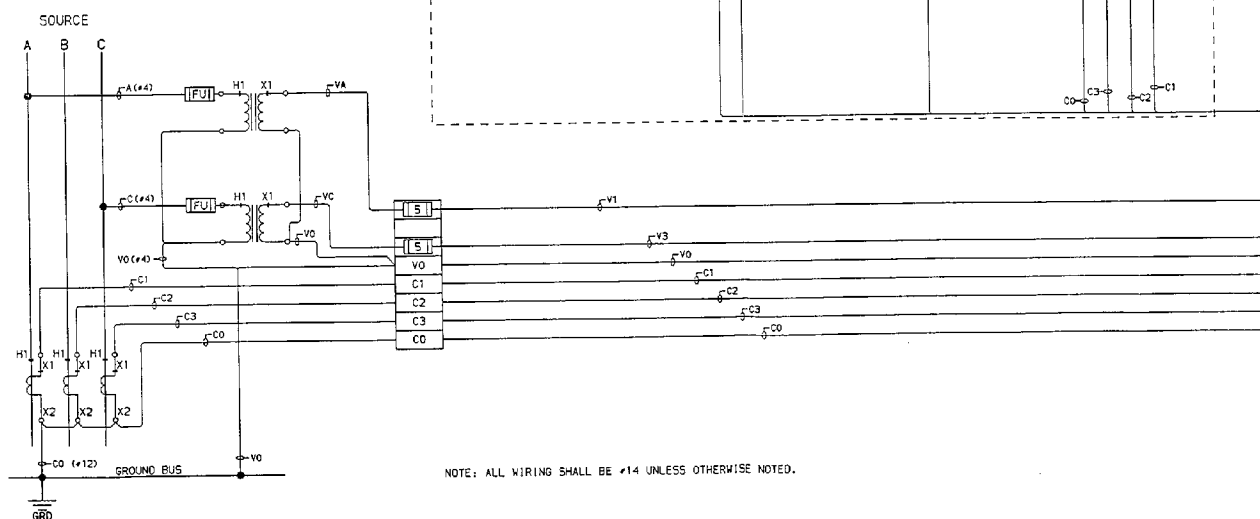
B	HVL20-021
---	-----------

REV
0

[illegible]

CONTACTS		DECK	POSITION						
			DEF	x	1	x	2	x	
11	12	1		x	x	x			
	13					x	x	x	
	14								x
21	22	2		x	x	x	x	x	
	23			x	x	x	x	x	
	24			x	x	x	x	x	

x DENOTES MAKE-BEFORE-BREAK
 • DENOTES CONTACT CLOSED



NOTE: ALL WIRING SHALL BE #14 UNLESS OTHERWISE NOTED.

"THE SQUARE D COMPANY HAS PROPRIETARY RIGHTS TO THE INFORMATION CONTAINED HEREON. THIS INFORMATION REMAINS THE PROPERTY OF SQUARE D COMPANY AND MAY BE USED ONLY IN CONFORMANCE WITH INSTRUCTIONS ISSUED BY SQUARE D COMPANY. THIS DOCUMENT IS ISSUED IN CONFIDENCE. IT MAY NOT BE REPRODUCED WITHOUT WRITTEN PERMISSION FROM THE SQUARE D COMPANY, AND MAY BE RECALLED AT ANY TIME."

APPLICATION STANDARD DRAWING

3-PHASE, 4-WIRE METERING DIAGRAM WITH THE FOLLOWING DEVICES:
3-CT, 2-VT, 1-AM, 1-AS, 1-WHM (DS-65 OR DSM-65).



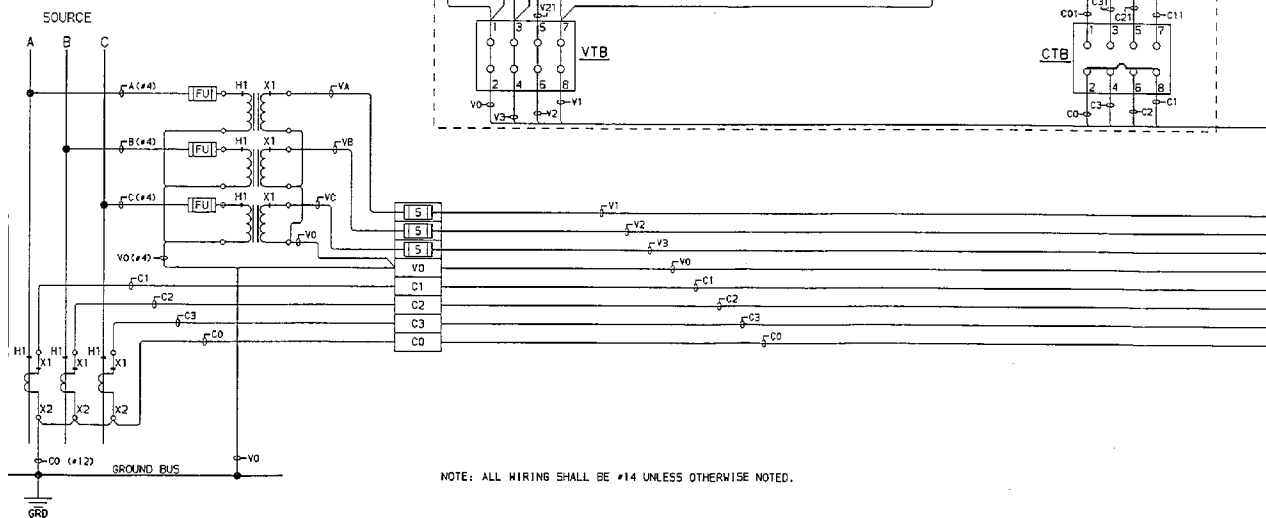
SQUARE D COMPANY

POWER EQUIPMENT DIVISION

B	HVL20-023
---	-----------

REV	0
-----	---

SQUARE D COMPANY
POWER EQUIPMENT DIVISION



NOTE: ALL WIRING SHALL BE #14 UNLESS OTHERWISE NOTED.

THE SQUARE D COMPANY HAS PROPRIETARY RIGHTS TO THE INFORMATION CONTAINED HEREON. THIS INFORMATION REMAINS THE PROPERTY OF SQUARE D COMPANY AND MAY BE USED ONLY IN CONFORMANCE WITH INSTRUCTIONS ISSUED BY SQUARE D COMPANY. THIS DOCUMENT IS ISSUED IN CONFIDENCE. IT MAY NOT BE REPRODUCED WITHOUT WRITTEN PERMISSION FROM THE SQUARE-D COMPANY, AND MAY BE RECALLED AT ANY TIME."

APPLICATION STANDARD DRAWING

3-PHASE, 4-WIRE METERING DIAGRAM WITH THE FOLLOWING DEVICES:
3-CT, 3-VT, 1-CTB, 1-VM, 1-VS, 1-VTB, 1-WHM (DS-65 OR DSM-65).



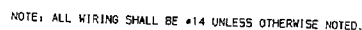
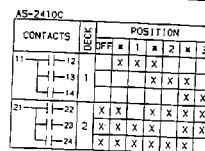
SQUARE D COMPANY

POWER EQUIPMENT DIVISION

B	HVL 20-026
---	------------

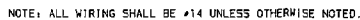
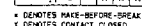
REV	
0	

V5-2405C		POSITION									
CONTACTS		DECK	3-1	2-3	1-2	OFF	1	2	3		
11	12	1					X				
	13								X		
	14										X
	15		X								
	16			X							
	17										
	18				X						
21	22	2						X			
	23									X	
	24										
	25		X								
	26			X							
	27										X
	28			X							
	29				X						



SQUARE D COMPANY
POWER EQUIPMENT DIVISION
B HVL20-027

CONTACTS		DECK	POSITION				
			OFF	1	2	3	4
11	12	1		X	X	X	
	13					X	X
	14						X
21	22	2	X	X		X	X
	23		X	X	X	X	X
	24		X	X	X	X	X



The logo for Square D Company, featuring a stylized 'D' inside a square, followed by the text 'SQUARE D COMPANY' and 'POWER EQUIPMENT DIVISION'. Below the logo is a label with the text 'B HVL20-028' and a small 'RE' in a box.

REV

--	--

REV
0